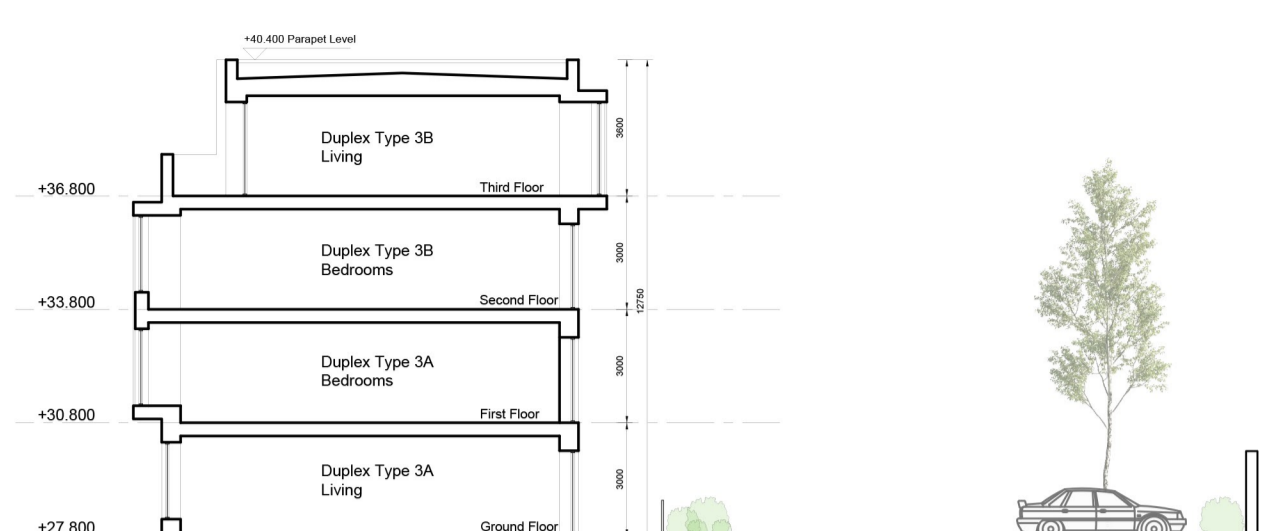




Street Elevation (South)



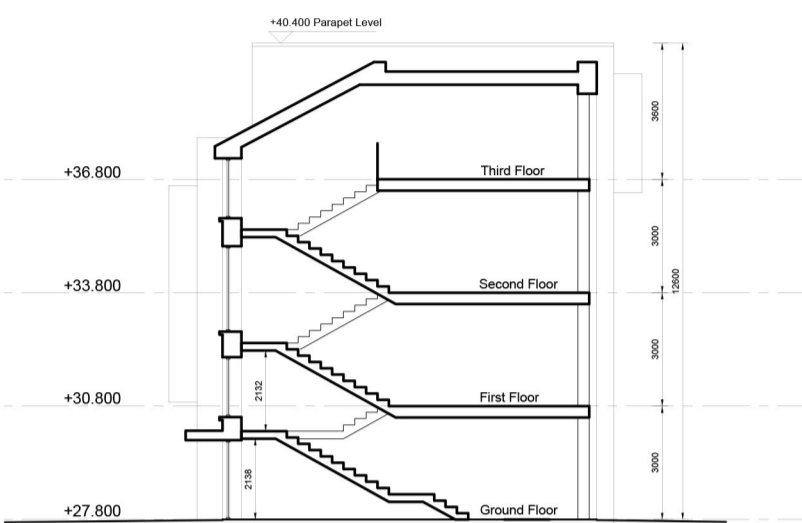
Section A



Key Plan (NTS)



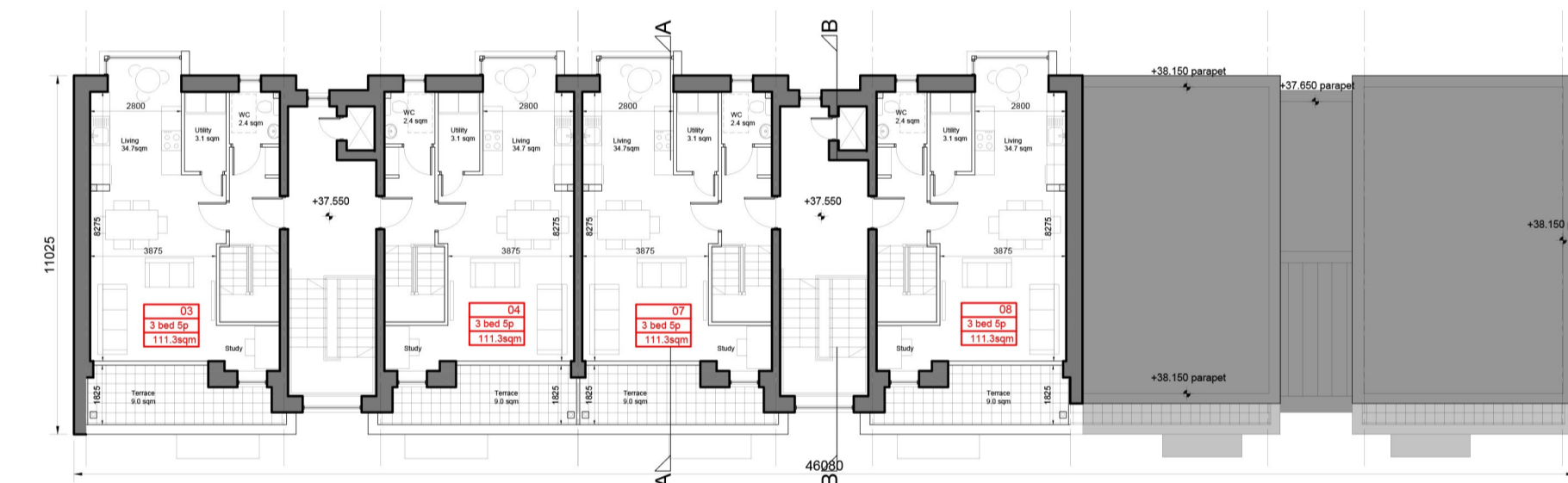
Rear Elevation (North)



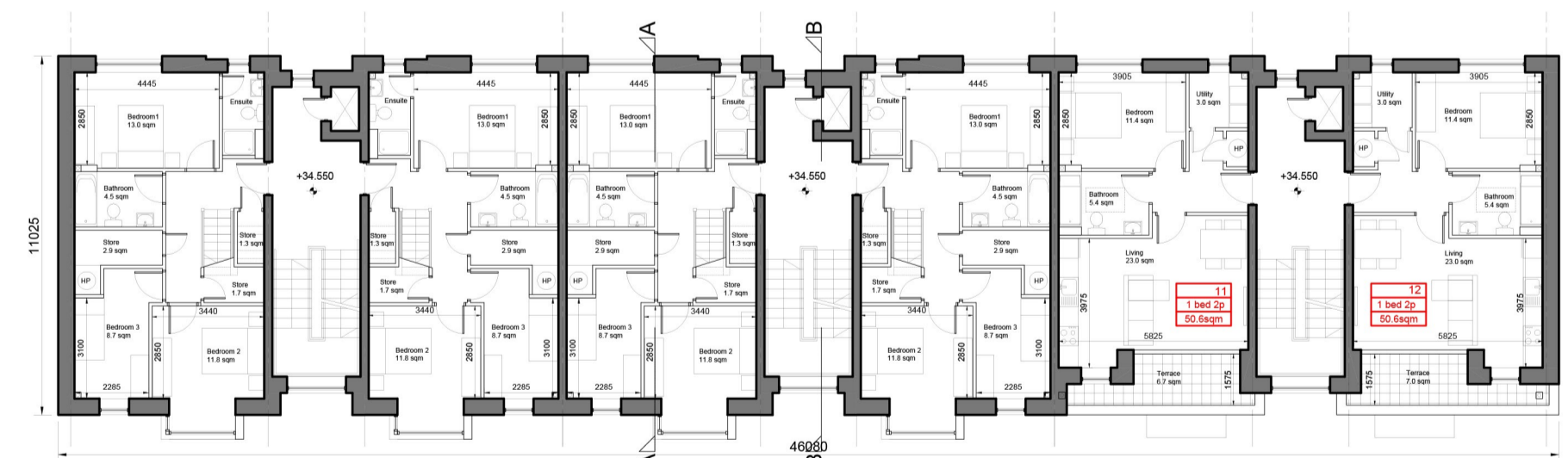
Section B



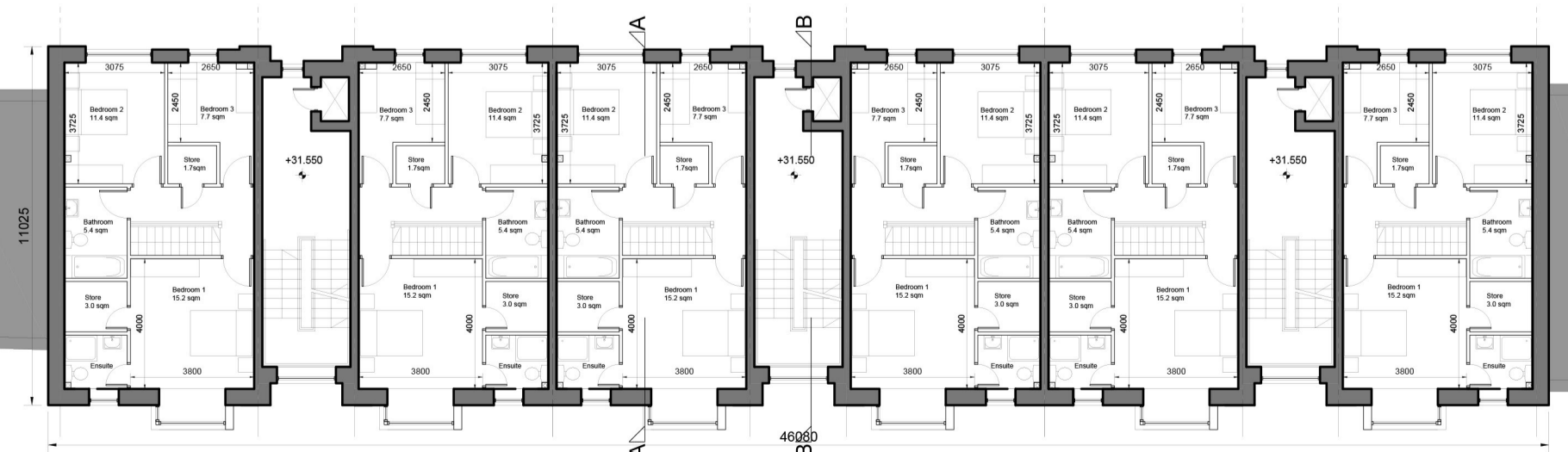
Roof Plan



Third Floor Plan



Second Floor Plan

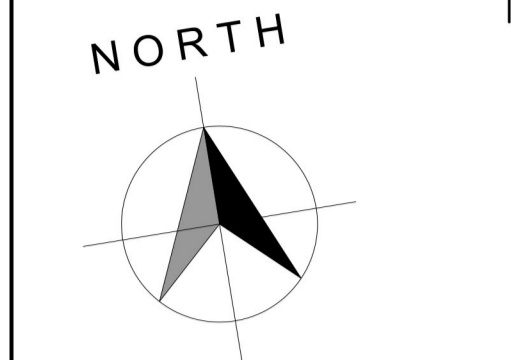


First Floor Plan



Ground Floor Plan

- © This drawing is copyright.
- 1 Do not scale this drawing.
- 2 Errors and omissions to be immediately notified to Architect.
- 3 All dimensions to be checked on site.
- 4 To be read with relevant Engineers drawings.



Breakdown of Units Per Block		
Apartment type	No.	% by beds
1 bed/ studio	0	0.00%
1 bed	2	16.67%
2 bed/ 3person	0	0.00%
2 bed/ 4 person	0	0.00%
3 bed/ 5 person	10	83.33%
Total	12	100.00%

Dual Aspect Ratio:	100.00%
Gross Internal Floor Area:	1715.9
Net Commercial Area:	0m ²

- Notes:
- All dimensions in millimetres
 - External Finishes:
 - Roof: Selected flat roof with parapets to walls.
 - Walls: Selected facing brick, Selected standing steam metal cladding, Selected aluminium curtain wall glazing with metal spandrel panels at circulation cores.
 - Windows: Aluminium or uPVC.
 - Gutters/downpipes: Internal outlets
 - Balconies: Powder coated steel & glass or similar
 - Doors: Powder coated aluminium or similar door with fanlight and/or sidelight

revisions date ins

description
DUPLEX BLOCK 3.3 TYPE 3

Floor plans, section & elevations

job
SHD DEVELOPMENT, BELCAMP, MALAHIDE ROAD, DUBLIN 17.

client
Gerard Gannon Properties

issue
SHD PLANNING APPLICATION

CONROY CROWE KELLY ARCHITECTS & URBAN DESIGNERS

65 MERRION SQUARE
 DUBLIN 2
 phone 01 6613990 fax 01 6765715
 email info@cck.ie

drawing no. 2008 PA 1 303

scale 1:200 A1
 date APR'22
 drawn CR
 checked COS